

HOW TO USE THE MSP GEOTRANS INSTALLANYWHERE EXECUTABLE FOR WINDOWS

Note: GEOTRANS Windows users are recommended to download the self installation InstallAnywhere package. After downloading the installation file from the web-site, double click on install.exe and follow the on-screen instructions to complete the installation. The 32-bit JRE is installed automatically and users can double click on the shortcut icon to start GEOTRANS.

In case users choose not to create shortcut icon, navigate to: <installation_dir>/GEOTRANS3 then double click on MSP_GEOTRANS3.exe to start GEOTRANS. **When the InstallAnywhere package is finished installing MSP GeoTrans, please restart your computer.**

FIGURE 1 – INSTALLANYWHERE INTRODUCTION SCREEN

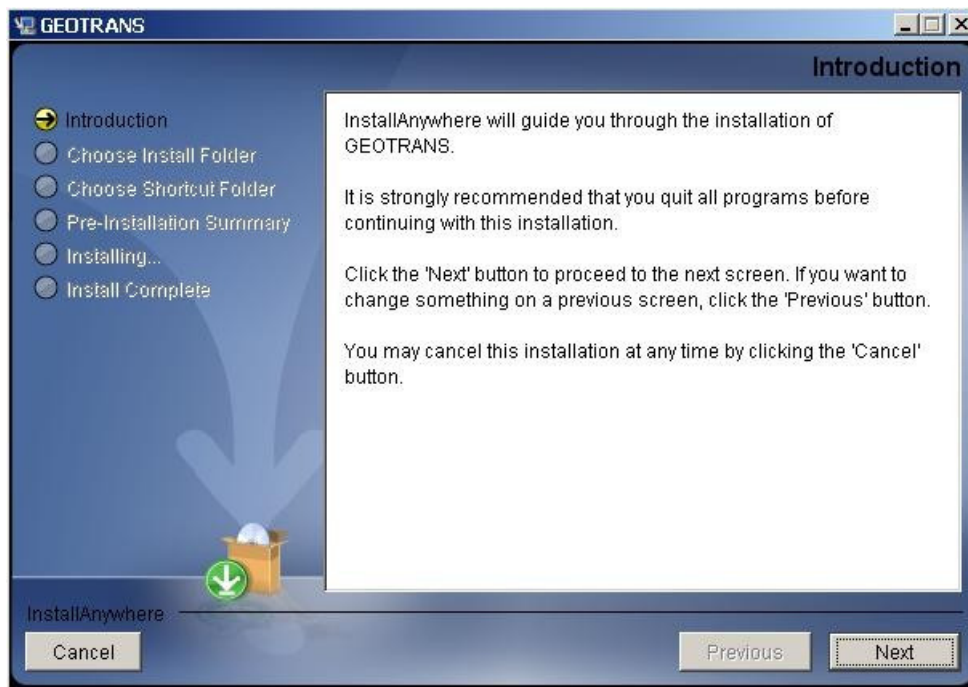


FIGURE 2 – INSTALLANYWHERE SHORTCUT FOLDER SCREEN

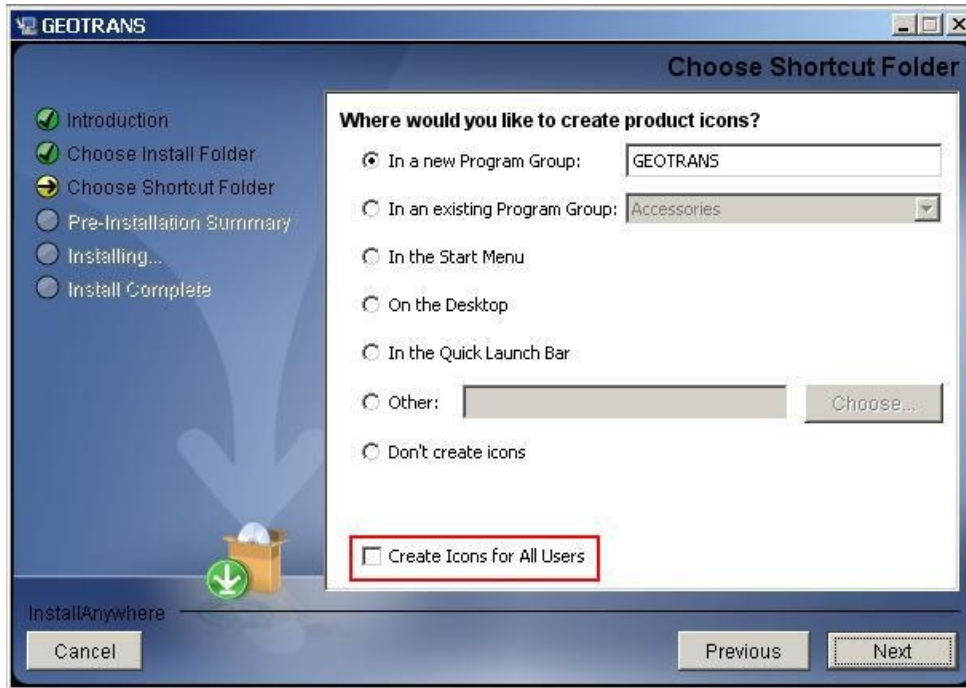
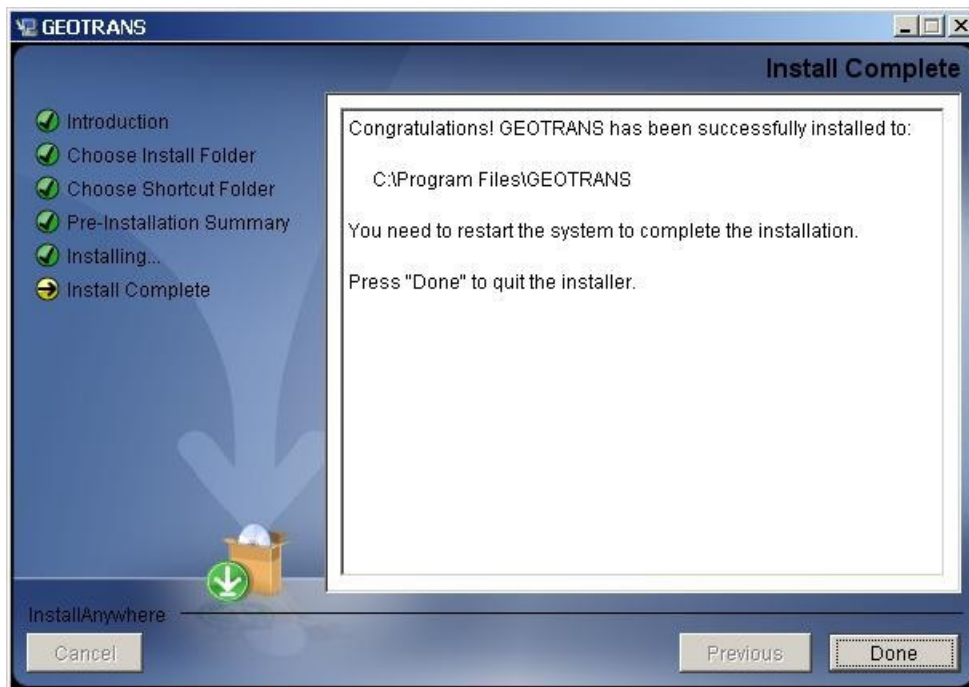


FIGURE 3 – INSTALLANYWHERE SUCCESSFUL INSTALL



MSP HELP DESK SUPPORT

For help with the installation, to report an issue, or for general support help of any kind, please send an unclassified email to: MSP_Help@nga.mil

GEOTRANS Enhancement Requests can also be reported to MSP Help or to the NGA Coordinate Systems Analysis Team (CSAT) at [314-676-9124, DSN 846-9124] – STL, [571-557-4002, DSN 547-4002] – DC, or email coordys@nga.mil.